

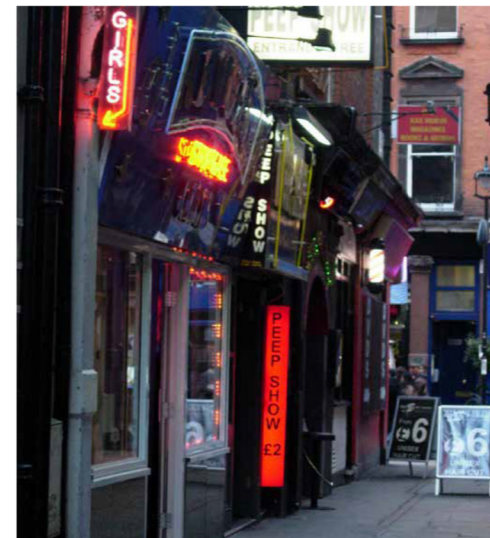
# Madame Jojo's - Historic context



Brewer street circa 1970



Brewer street circa 2010

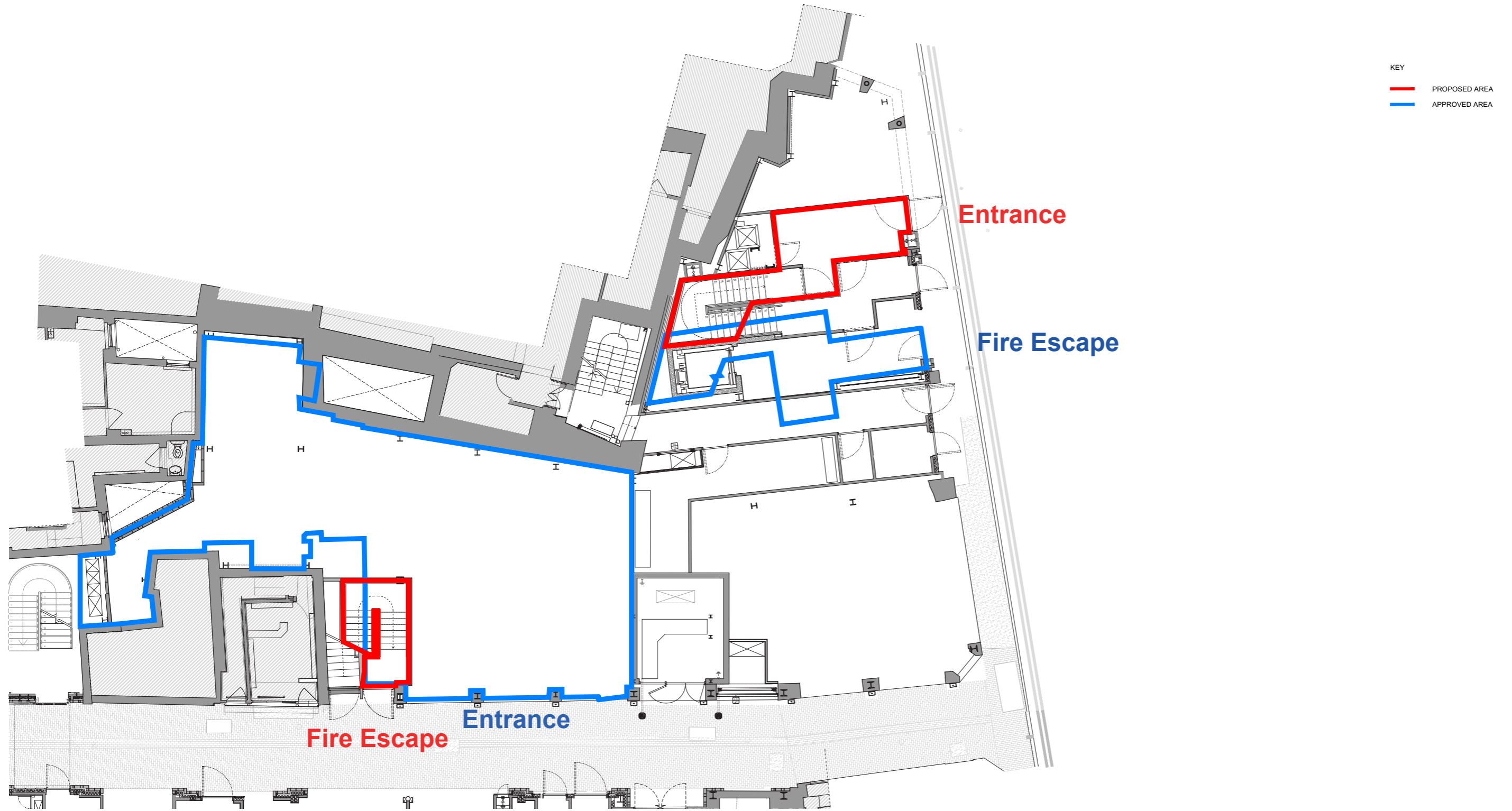


Walker's Court before redevelopment

# Madame Jojo's - Historic context

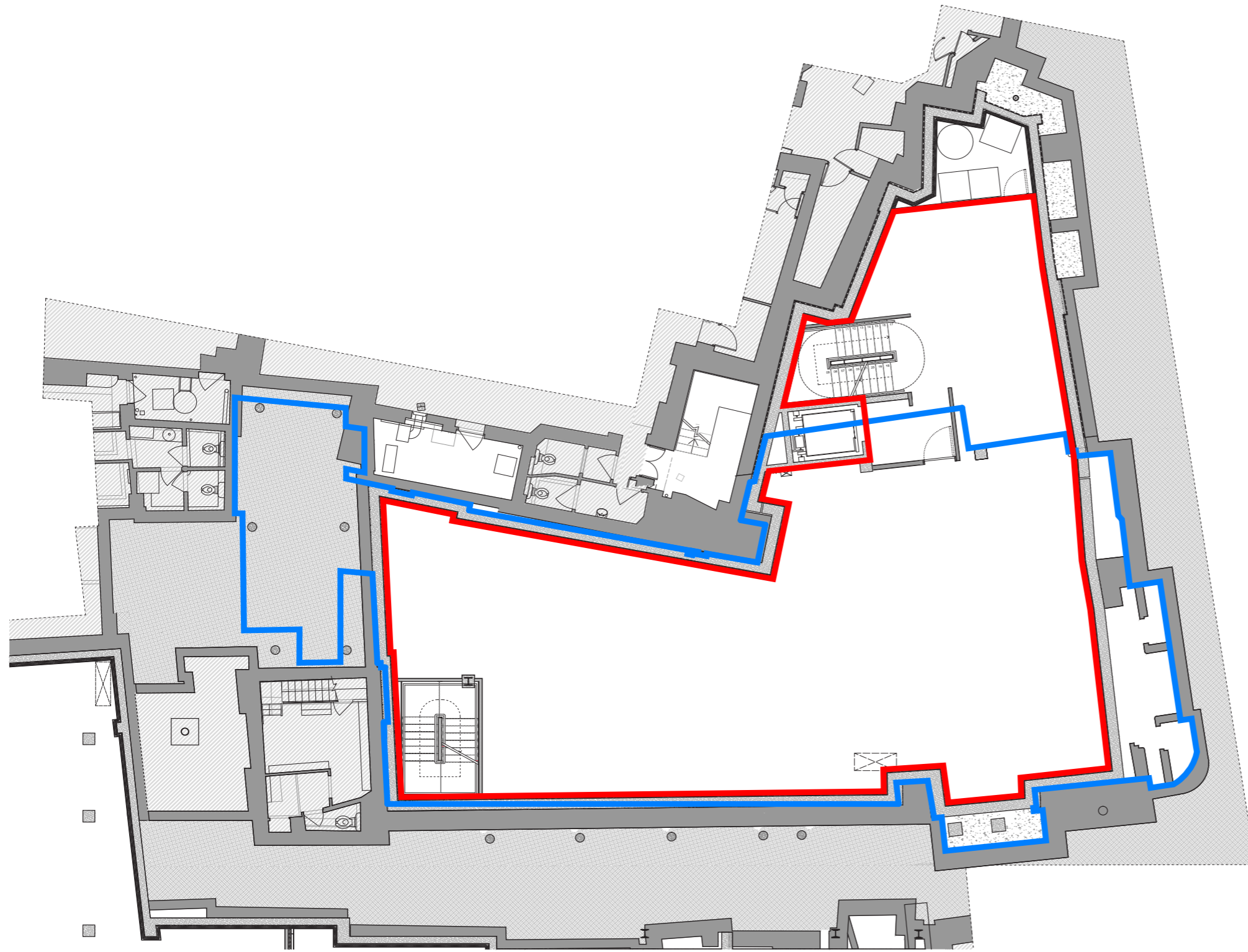


# Comparison of 2014 approved licence demise with 2019 proposed licence demise



Ground floor

# Comparison of 2014 approved licence demise with 2019 proposed licence demise



KEY  
— PROPOSED AREA  
— APPROVED AREA

Upper basement floor

# Comparison of 2014 approved licence demise with 2019 proposed licence demise





KEY  
— PROPOSED AREA  
— APPROVED AREA

Lower basement floor

# Entrance location of Madame Jojo's



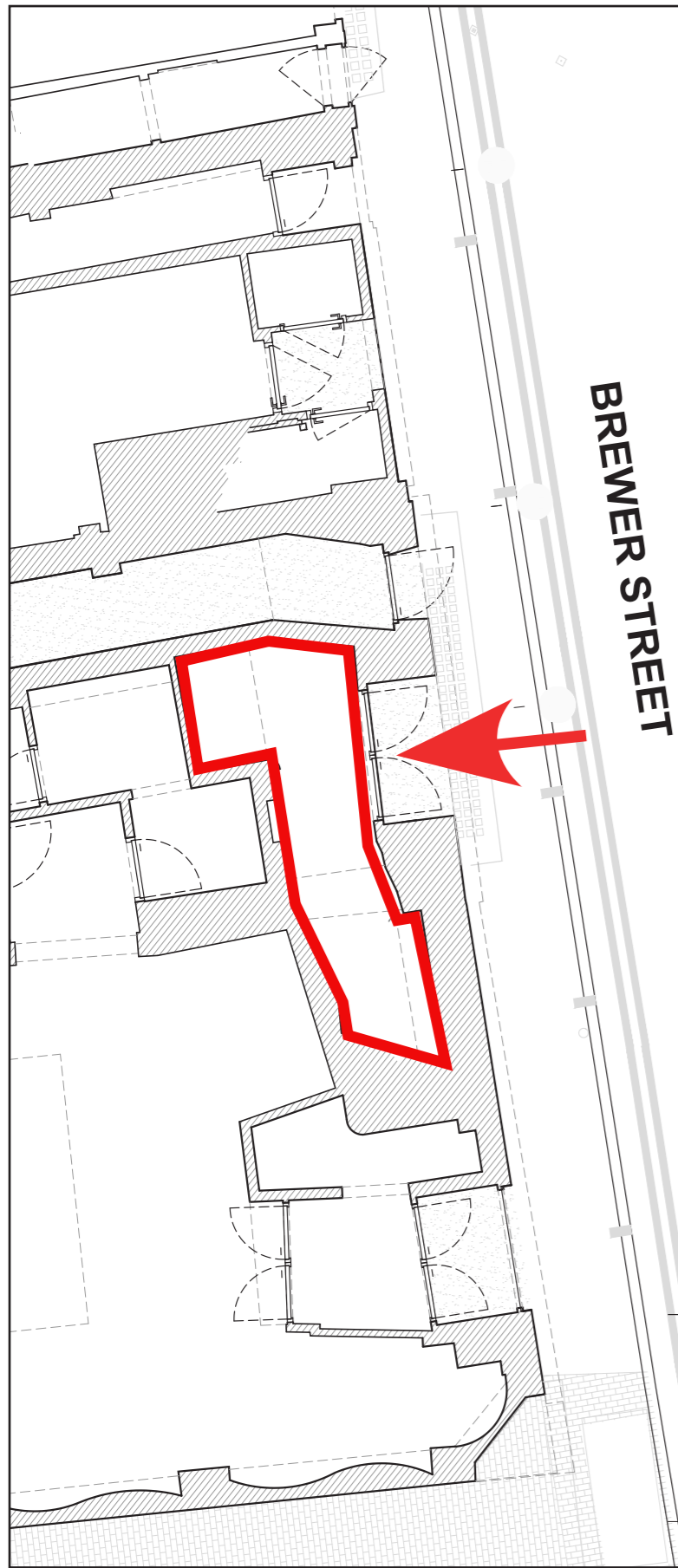
Historic entrance

-  Historic Escape bar entrance
-  Historic Madame Jojo's entrance



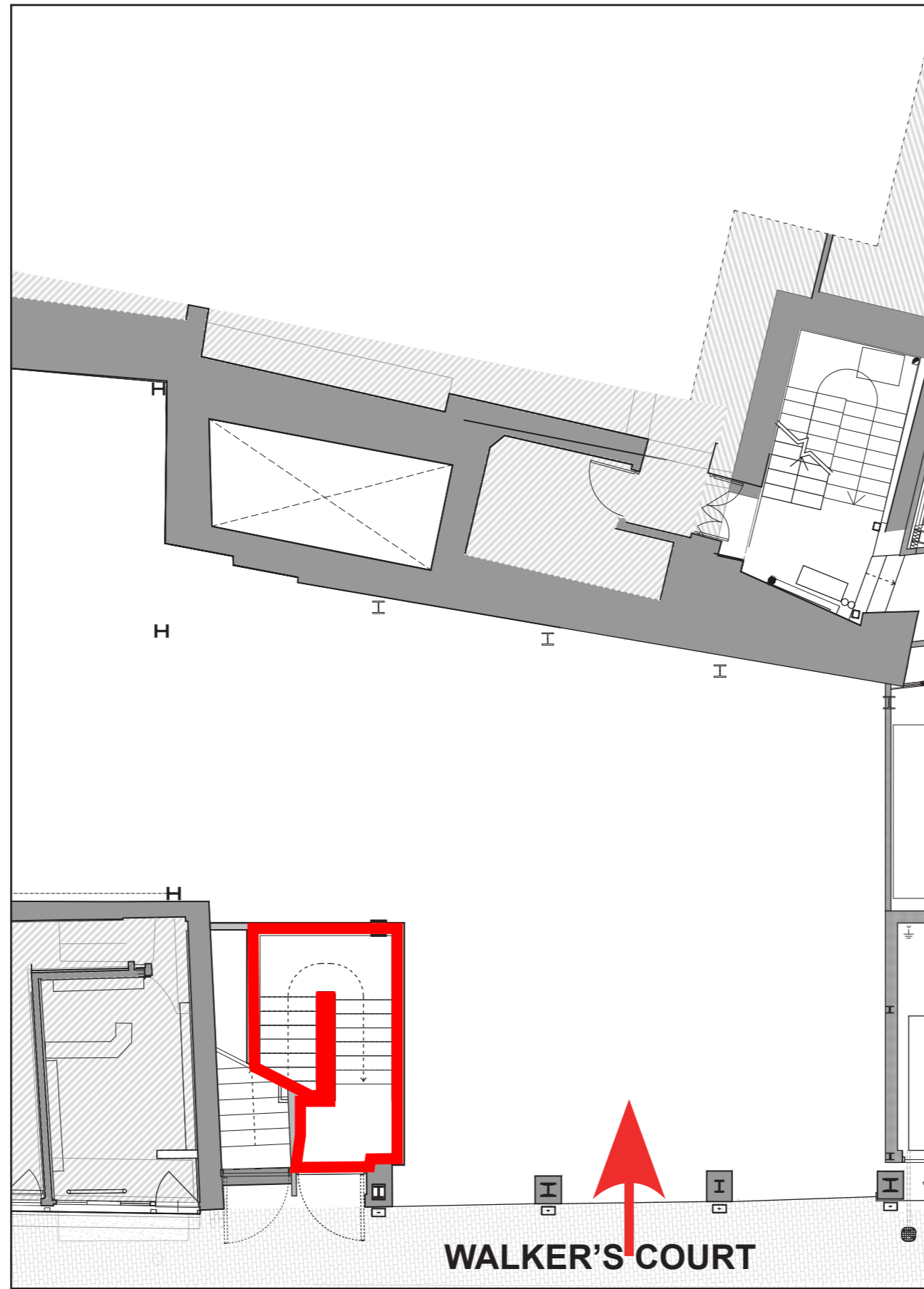
Proposed entrance

-  Proposed Madame Jojo's entrance



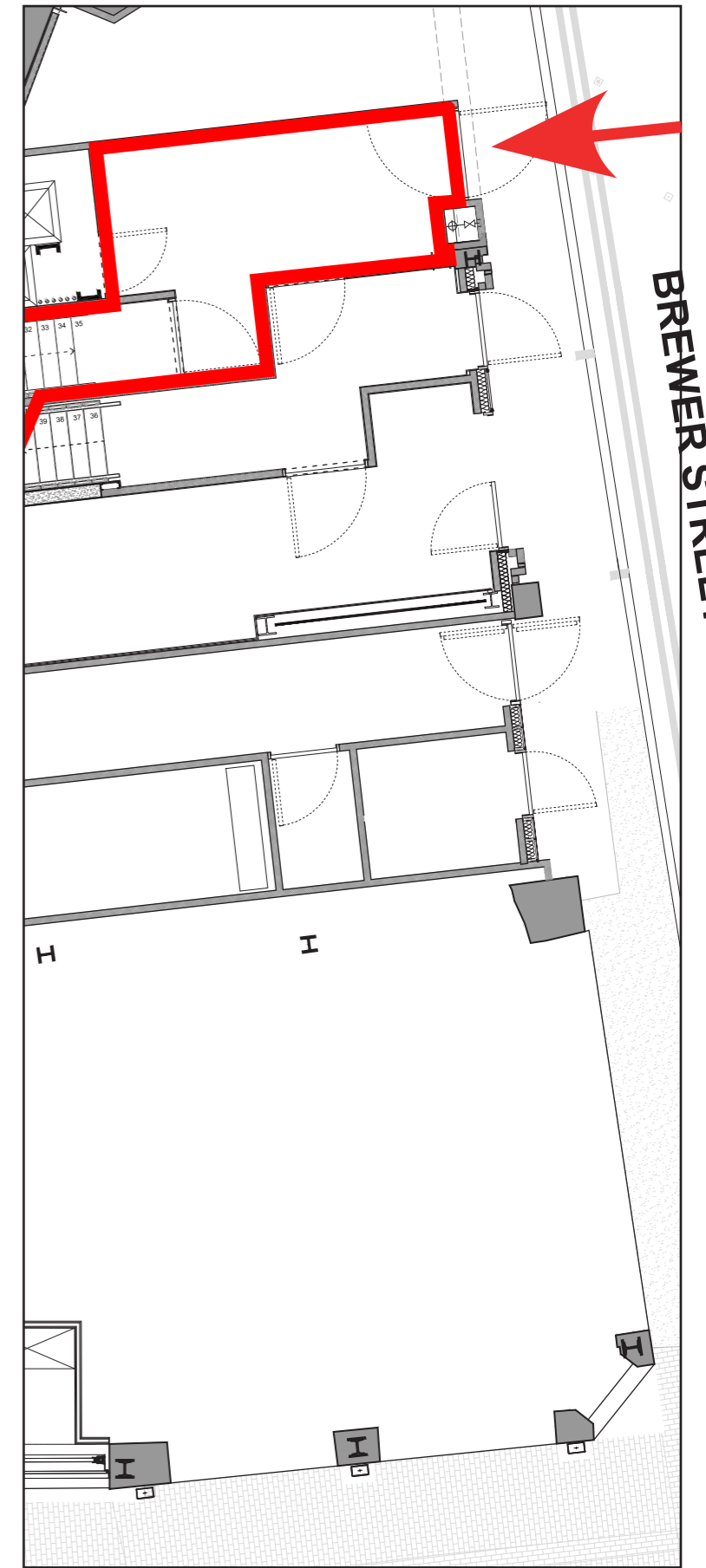
BREWER STREET

Historic entrance



WALKER'S COURT

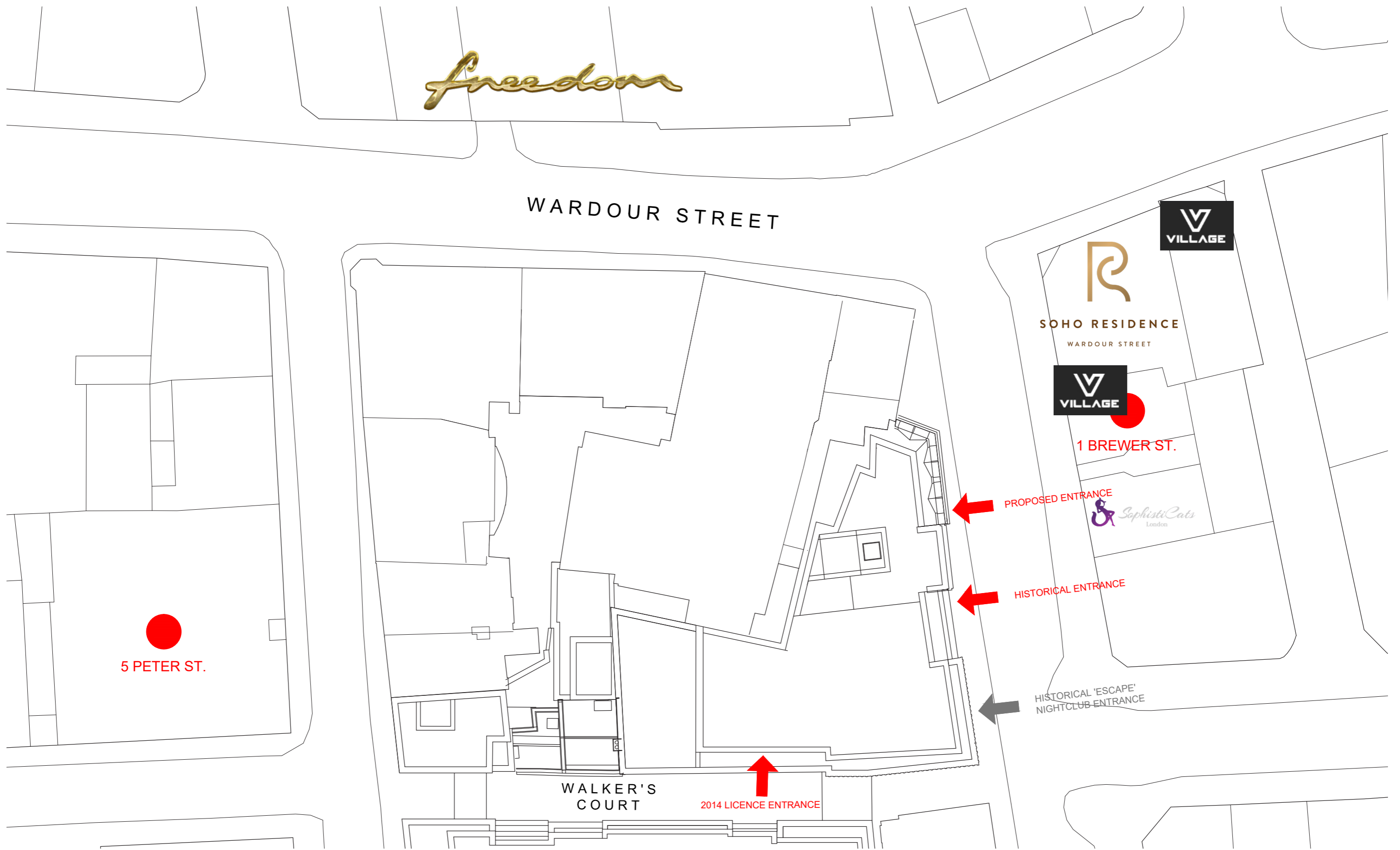
Proposed entrance 2014 License granted



BREWER STREET

Proposed entrance 2019

The current proposal returns the entrance of Madame Jojo's back to Brewer street and within close proximity of its original location. Reinforcing the historic character of the street and the iconic venue. While also allowing for active daytime retail frontage to both sides of Walker's Court



**Village Soho - licensed until 03.00 with capacity of 400**

**Freedom Bar - licensed until 03.00 with capacity of 275**

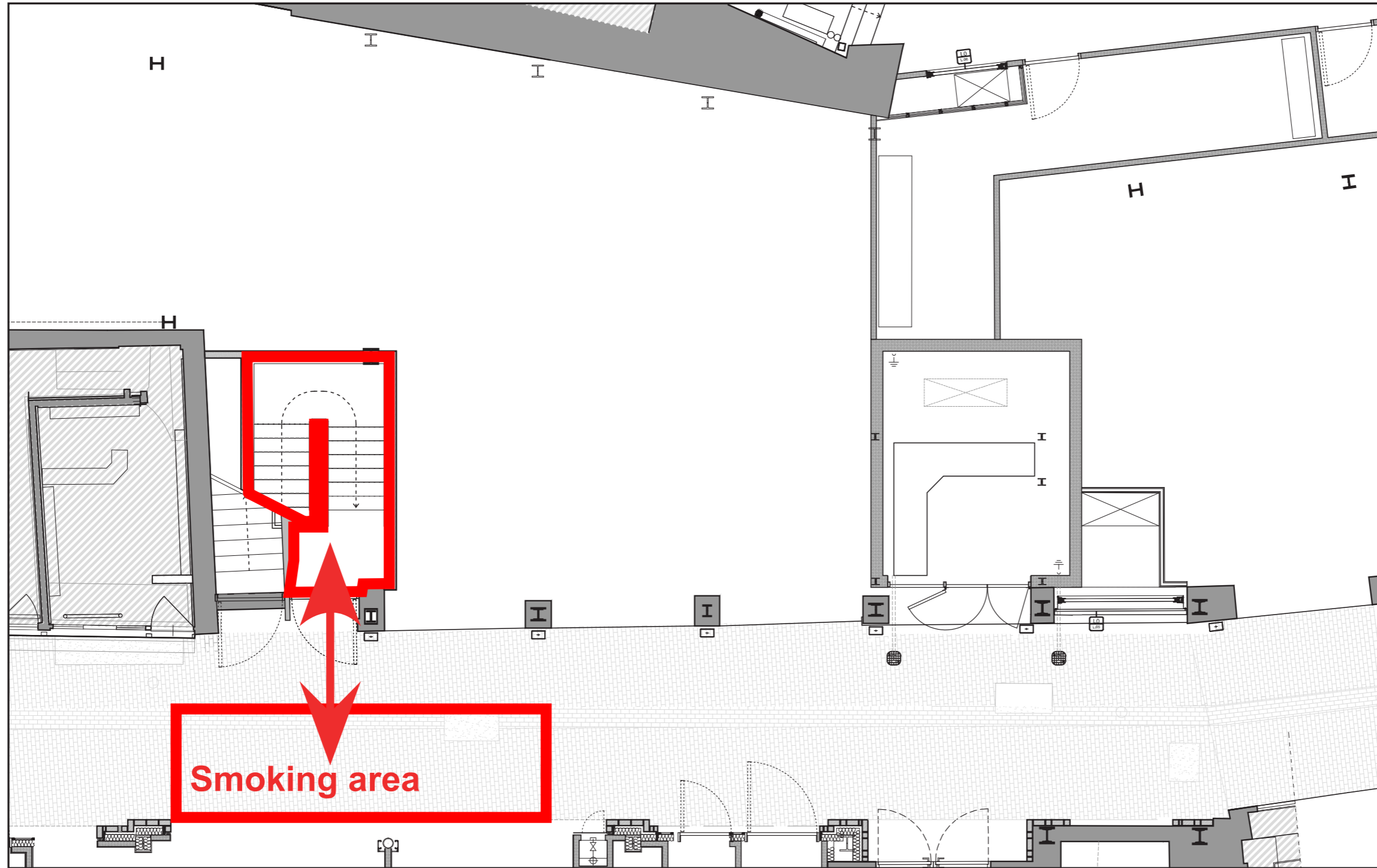
**Soho Residence (licensed until 03.00 with capacity of 338)**

**Sophisticats Soho (Shadow Lounge) - licensed until 03.00 with capacity of 100**

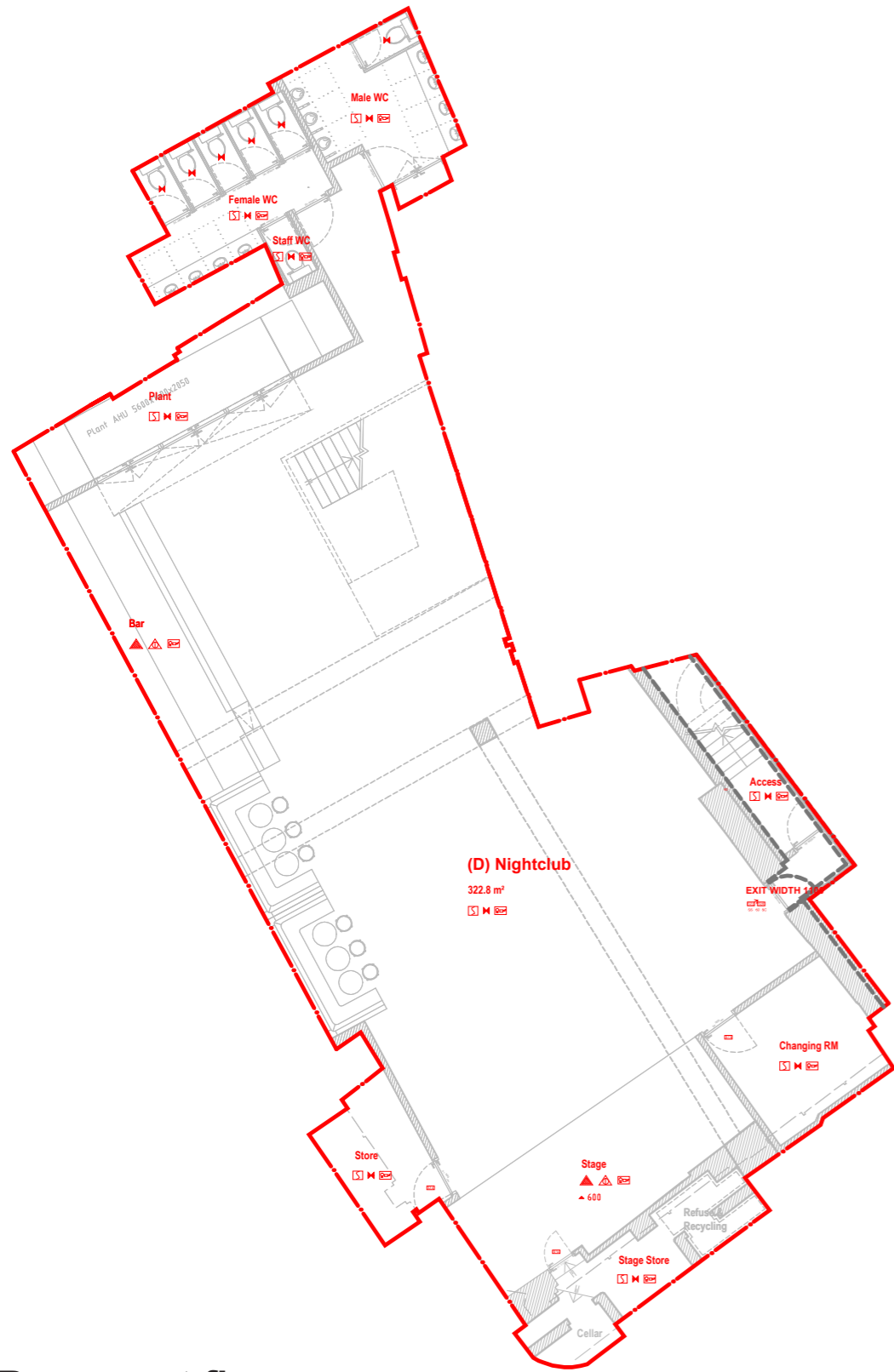




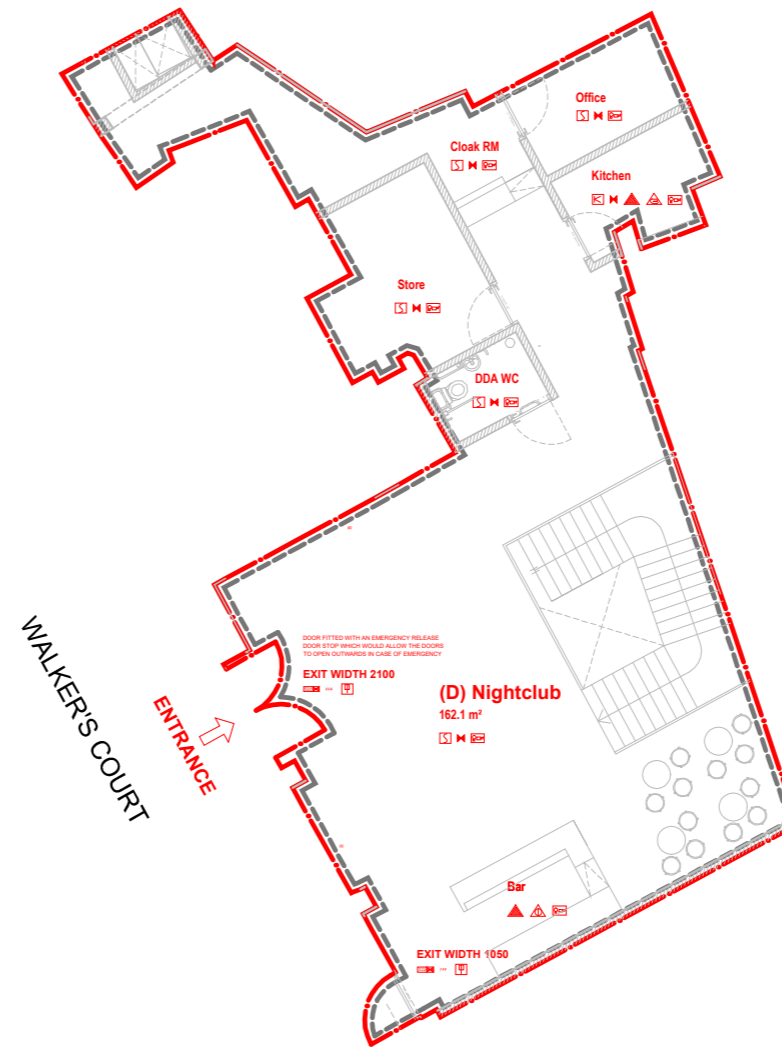
# Smoking arrangements



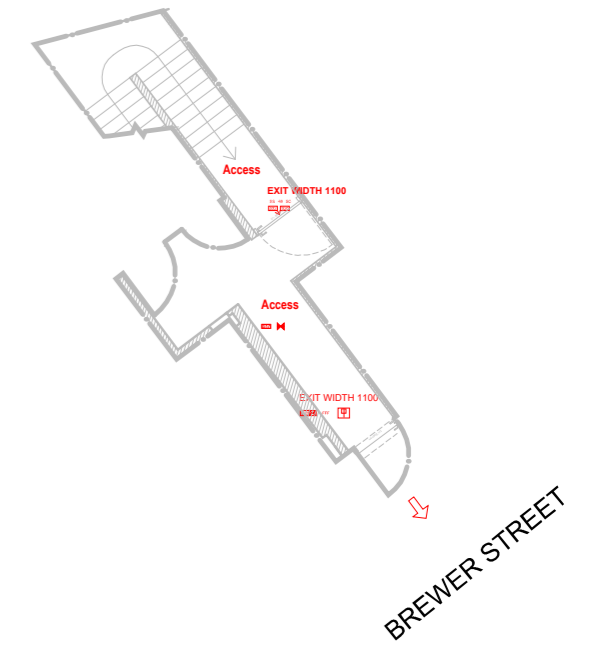
# Approved License drawings 2014



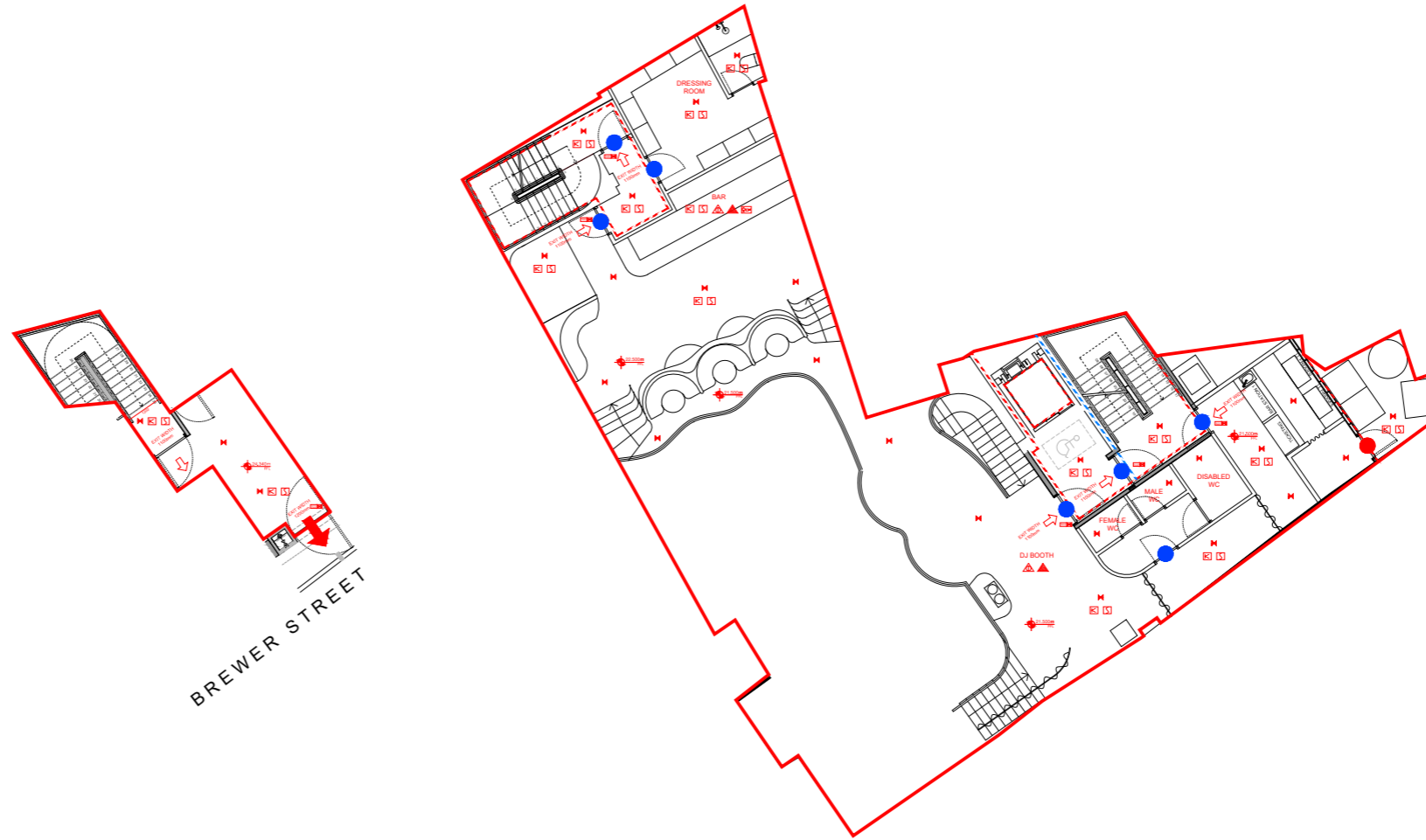
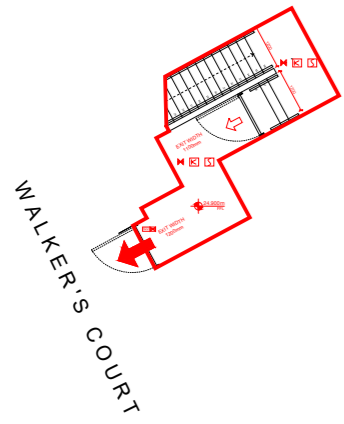
Basement floor



Ground floor



# Proposed License drawings



- FIRE SYMBOLS**
- LINEAR LUMINAIRE, SELF CONTAINED
  - LINEAR LUMINAIRE, SELF CONTAINED, EMERGENC
  - LUMINAIRE, SELF CONTAINED, EMERGENCY
  - EXTINGUISHER, WATER
  - EXTINGUISHER, FOAM
  - EXTINGUISHER, CO2
  - FIRE BLANKET
  - FIRE MAIN, WET
  - FIRE MAIN, DRY
  - AURAL & VISUAL SOUNDERS
  - DETECTOR, HEAT
  - DETECTOR, SMOKE
  - MANUAL CALL POINT
  - IN EVENT OF FIRE, AVOID USE OF LIFT
  - FIRE DOOR, KEEP SHUT
  - FIRE DOOR, KEEP LOCKED
  - FIRE ESCAPE, KEEP CLEAR
  - FIRE EXIT
  - PUSH BAR TO OPEN
  - DIRECTIONAL ARROW (GREEN)
  - FIRE ALARM CALL POINT
  - GANGWAY KEEP CLEAR
  - PUSH BAR IRONMONGERY
  - VISION PANEL
  - SELF CLOSING
  - SMOKE RESISTING
  - 30 MINUTES FIRE DOOR
  - 60 MINUTES FIRE DOOR
  - INTERNAL REPEATER PANEL
  - EXTERNAL REPEATER PANEL
  - FREE FROM FASTNINGS
  - EXTENTS OF PROPOSED DEMISE
  - ANCILLARY / SHARED SPACE
  - 30 MINUTES FIRE RESISTING CONSTRUCTION
  - 60 MINUTES FIRE RESISTING CONSTRUCTION

Ground floor

Upper basement floor

# Proposed License drawings



## FIRE SYMBOLS

- LINEAR LUMINAIRE, SELF CONTAINED
- LINEAR LUMINAIRE, SELF CONTAINED, EMERGENCY
- LUMINAIRE, SELF CONTAINED, EMERGENCY
- EXTINGUISHER, WATER
- EXTINGUISHER, FOAM
- EXTINGUISHER, CO2
- FIRE BLANKET
- FIRE MAIN, WET
- FIRE MAIN, DRY
- AURAL & VISUAL SOUNDERS
- DETECTOR, HEAT
- DETECTOR, SMOKE
- MANUAL CALL POINT
- IN EVENT OF FIRE, AVOID USE OF LIFT
- FIRE DOOR, KEEP SHUT
- FIRE DOOR, KEEP LOCKED
- FIRE ESCAPE, KEEP CLEAR
- FIRE EXIT
- PUSH BAR TO OPEN
- DIRECTIONAL ARROW (GREEN)
- FIRE ALARM CALL POINT
- GANGWAY KEEP CLEAR
- PUSH BAR IRONMONGERY
- VISION PANEL
- SELF CLOSING
- SMOKE RESISTING
- 30 MINUTES FIRE DOOR
- 60 MINUTES FIRE DOOR
- INTERNAL REPEATER PANEL
- EXTERNAL REPEATER PANEL
- FREE FROM FASTNINGS
- EXTENTS OF PROPOSED DEMISE
- ANCILLARY / SHARED SPACE
- 30 MINUTES FIRE RESISTING CONSTRUCTION
- 60 MINUTES FIRE RESISTING CONSTRUCTION

## Lower basement floor

## Reaction after the closure of Madame Jojo's

